

ADVANTCRAFT®

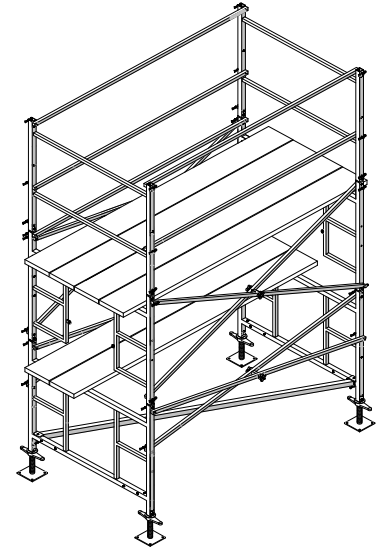
ADVANTCRAFT®

Model 3948 Scaffold

A stackable scaffold system built with the maintenance professional in mind. Light weight, yet rugged, and easily transports in your minivan or pick-up truck. Convenient for general interior or exterior maintenance. Capacity to 700 lbs. (25 lbs. per square foot load uniformly distributed over a 4 x 7 ft. deck plank surface).

Optional expansion sets stack vertically or end-to-end, extending the work platform size and height.

(Standard Platform Height: 6 ft. - 3 in. or with Leveler Jacks 7 ft.- 3 ¼ in. (3 unit stack). Expandable to 13 ft. 11½ in. with optional End-Frame sets (5 unit stack); Tiebrace attachments separately available for increasing top platform height up to 30 feet.)



- Compact design for tight spaces and portability
- Invertible end-frames allow open walkthrough between adjacent units
- Corrosion resistant hardware
- Breaksdown to fit in the back of a pick-up truck or minivan.
- Almond color powder coated finish over epoxy primer

STANDARD SCAFFOLD (3 TIER):

(EACH SET SOLD SEPARATELY)

- 3948-SBS Scaffold Base Set
- 3948-SFS Scaffold Frame Set
- 3948-SRS Scaffold Rail Set
- 3948-SPS Scaffold Plank Set

ACCESSORIES:

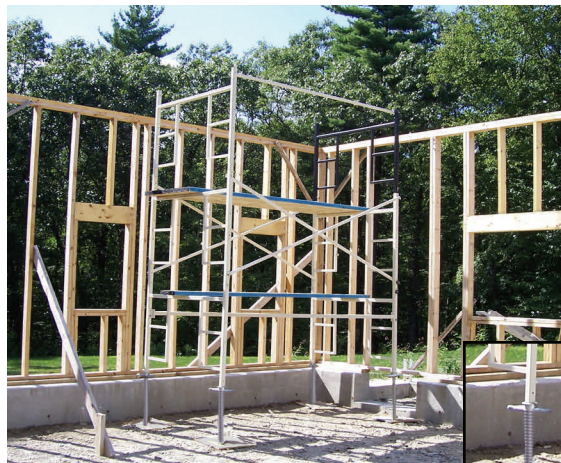
- 3948-FBLJ1 Fixed Base Leveler Jack
- 3948-STSS Side Toeboard Set
- 3948-ETS End Toeboard Set
- 3948-ORS Scaffold Outrigger Set
- 3948-TB13 Tiebraces

STANDARD FEATURES:

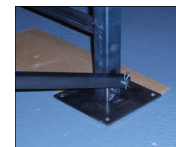
- End-Frame Units (39-3/4" High x 48" Wide)
- Gate Access & Rail Panels
- Cross and Diagonal Braces
- Scaffold-Grade Deck Planks
- Guard Rails (Hand & Midrails)
- Fixed Base Pads (6"x 6")

OPTIONAL FEATURES:

- Frame Leveler Jacks providing up to 11" of vertical adjustment.
- Additional End-Frame Sets for expansion or custom set-up.
- Outriggers and Tiebraces available to allow increased stack height.
- Side Toeboards (2"x6")



EASY ASSEMBLY – Starting with End-Frame Units, Cross Braces, Diagonal Brace, Hand Rails, Scaffold Planks, mounted on optional Leveling Jacks (shown).



Fixed or Adjustable Supports – Standard Base Pads (left) or optional Leveler Jacks (right) slide up into End-

MADE IN USA